

OUR MISSION

The mission of Chester County Leadership Connection is to strengthen future Chester County non-profit boards by developing leaders who will focus on creating a vibrant, safe and inclusive community.

Advisory Board

Chairman

Randall Schauer, Esquire
Fox Rothchild, LLP

Treasurer

Elizabeth Guman, Partner
Learning & Vision Partners

Dr. Chris Fiorentino, Dean
School of Business and Public Affairs
West Chester University

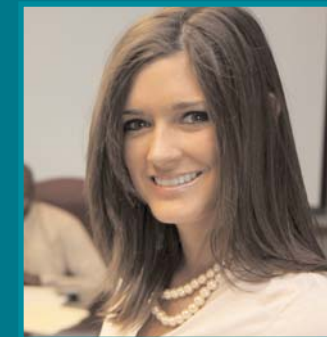
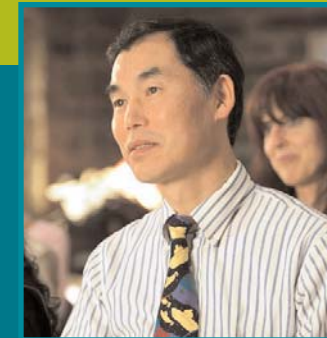
Katherine Harlan
Marketing Director
Chester County Intermediate Unit

Claudia Hellebush
President/CEO
United Way of Chester County

Earl Johnson
Public Affairs/Voluntary Service Officer
The Veterans Administration

Marianne Martelli
Vice President of Operations
Chester County Chamber of Business & Industry

Robert Powelson
President
Chester County Chamber of Business & Industry



CCLC
Chester County Leadership Connection

For information about applying to CCLC, please contact Mary Anne Feeley at 610-429-9400 or maryanne.feeley@unitedwaychestercounty.org. Your company or firm may wish to subsidize the participant fee, which is due prior to the first session.

CHESTER COUNTY LEADERSHIP CONNECTION ALUMNI DIRECTORY CLASS OF 2008

The Chester County Leadership Connection is a partnership between United Way of Chester County, Chester County Chamber of Business and Industry and West Chester University. To learn more about the other programs of these organizations, contact United Way of Chester County at 610-429-9400, 2 West Market Street, West Chester, PA 19382 or Chester County Chamber of Business and Industry at 610-725-9100, 1600 Paoli Pike, Malvern PA 19355.





PROGRAM HIGHLIGHTS

PUBLIC POLICY AND CITIZEN ADVOCACY

Overview of how federal and state public policy as well as citizen advocacy impact the non-profit social service sector's work with diverse needs in the community.

CHESTER COUNTY TOUR

Introductory group bus tour visits key areas of Chester County to develop awareness of scope of local needs and resources, and reflect on where gaps exist.

NON-PROFIT PROJECT

A United Way of Chester County Partner Agency presents a real organizational challenge, for which the Leadership Class devises a plan of action as they go through the course year. The project affords the opportunity to apply learning on board governance with business expertise to offer meaningful solutions for the non-profit.

BOARD GOVERNANCE

Key aspects of effective board service are explored: appropriate roles and relationships for board and staff, sound policies and structure for board and organizational development, all essential elements for strong nonprofit governance.

INTERPERSONAL SKILLS

Exercises in group dynamics and personal interaction style provide skills to enhance communications and motivate others into action toward shared goals.

BOARD FIDUCIARY RESPONSIBILITY

Participants gain awareness of non-profit board responsibilities to ensure appropriate organizational standards and functions. Legal expert offers risk management and personal liability guidelines to insulate non-profits and their board members.

STRATEGIC PLANNING

Skills prepare leaders to create a compelling vision, clear and measurable goals to achieve it and the means to assess progress. The session covers the strategic planning process, and offers practical tips to involve stakeholders and communicate vision.

DIVERSITY

Participants examine personal viewpoints and the value of diversity in organizational development. Strategies are offered to overcome cross-cultural barriers and develop greater sensitivity and understanding of the cultural issues unique to Chester County.

FUNDRAISING

Methods for successful fundraising and resource development for the private non-profit organization. Various techniques are discussed: direct mail, special events, capital campaigns, annual giving, planned giving, as well as foundation and government grants.

NON-PROFIT FISCAL MANAGEMENT

Provides understanding of financial statements, cash management, budgets, and audits to teach responsible financial oversight.

PRINCIPLE-CENTERED LEADERSHIP SKILLS

Historical and practical analysis of various leadership styles and decision making skills builds a strong foundation for ethical and visionary board leadership.

Chester County Leadership Connection



LEO J. ADALBERT *Alliance and Program Leader - Global Business Development, AstraZeneca Pharmaceuticals, Inc.*
Volunteer Experience Huntington's Disease Society of America National Board, American Academy of Neurology, Community Service Volunteer ETCC, Camden NJ
Professional Expertise Strategy, Communications, Marketing, Program Management
Community Service Interests Youth Development, Health Care, Abuse, Education
Vision for Citizen Leadership Everyone has the capacity to make a positive difference and drive transformation to a better place in his or her own unique way



JIM BOGUSH *Operations Manager, Communications Test Design, Inc.*
Volunteer Experience Baseball coach for Downingtown Little League
Professional Expertise Management
Community Service Interests Senior Citizens, Youth Development and Education
Vision for Citizen Leadership Citizen Leadership requires a person who exhibits strength in their abilities, in their knowledge and in their experience. A good leader needs to be fair, firm, and forceful.



JENNIFER CORRIGAN *Vice President, Commercial Banking, Willow Financial Bank*
Volunteer Experience Chester County Chamber of Business & Industry, Exton Chamber of Commerce, United Way Campaign, M&T Bank, The Greater Bethesda-Chevy Chase Chamber of Commerce, Kappa Alpha Theta Facility Corporation
Professional Expertise Commercial Lending
Community Service Interests Youth Development, Workforce Development, Health Care
Vision for Citizen Leadership I think you find the most reward when you are able to work and serve in the community in which you live



MICHAEL R. CROMER *Project Manager / Sr. Hydro geologist, Brickhouse Environmental*
Volunteer Experience Church, Retirement Homes, Ducks Unlimited, Home Builders Association's Government Affairs Committee
Professional Expertise Licensed Professional Geologist (PA & DE), Environmental Business Risk Assessment, Residential & Commercial Site Development, Solid Waste/Landfill Services
Community Service Interests Environmental protection, underprivileged children
Vision for Citizen Leadership Leadership is best displayed by example. Hard work and dedication to any cause will result in success.



CINDY I. FAULKNER *Associate Director, Regulatory Affairs, AstraZeneca Pharmaceuticals LP*
Volunteer Experience Easter Seals, United Way Days of Caring, Delaware Valley Science Fairs, Church Board, Finance and Administration Committee
Professional Expertise Strategic Planning, Leadership, Regulatory Compliance, Project Management, Environmental Issues
Community Service Interests Health Care, Arts and Humanities, Environmental Issues/Open space, Homelessness
Vision for Citizen Leadership Inspire, involve, plan, and deliver...and be creative about it!



KRISTIN GREEN *Assistant Vice President/Branch Office Manager, DNB First*
Volunteer Experience Habitat for Humanity
Professional Expertise Business Management: Banking
Community Service Interests Education, Diversity, Women's Issues
Vision for Citizen Leadership Building strong relationships through honesty and trust, one person at a time.



TIMOTHY J. GREIM *CIO/VP of Information Technology, Citadel Federal Credit Union*
Volunteer Experience Youth Sports, Affordable Housing/Rehabilitation, Downs Syndrome Special Interest Group
Professional Expertise Banking, Information Technology, Business Management
Community Service Interests Disabilities, Mental Health/Downs Syndrome, Youth Development, Domestic Violence/Child Abuse
Vision for Citizen Leadership A collaborative approach to giving the necessary focus, attention and dedication of time, resources and money to the purpose at hand and not for personal or political gain and recognition.



CLAY T. HENRY *Executive Vice President, First National Wealth Management*
Volunteer Experience West Chester Public Library Board of Trustees, Ursinus Planned Giving Advisory Board, U.S. Naval Academy Alumni Association-Philadelphia Chapter Board
Professional Expertise Wealth Management and Investments, Management
Community Service Interests Children's Services, Mental Health Counseling, Open Space/Land Preservation
Vision for Citizen Leadership Working together cooperatively to help those who need it.



ALRAY JOHNSON SR. *Founder/COO, Chester County Community Cable TV*
Volunteer Experience Don't Do DAT (Drugs, Alcohol, Tobacco), Communities That Care: Church Trustee; Olde Mill Camp Instructor; Black Student Union
Professional Expertise Youth Sports Coach, Highway Traffic Safety, Video/Public Access Cable TV Production
Community Service Interests Economic Development, Education, Public Policy/Advocacy
Vision for Citizen Leadership Leaders must be held accountable on all fronts to help develop a more caring community



KEVIN KRAUSS *Account Development Manager, United Way of Chester County*
Volunteer Experience Penn State Brandywine Board of Trustees Student Representative; Penn State Student Government
Professional Expertise Corporate Fundraising and Account Development
Community Service Interests Board Governance, Homelessness, Working poor, Youth in the creative arts
Vision for Citizen Leadership Everyone needs a helping hand at least once in their life: it is up to us to make sure that our hands are ready for theirs.



TRACIE M. KREIGHBAUM *Public Librarian*
Volunteer Experience Friends of the East Lansing Public Library Board, U.S. Peace Corps, Salvation Army, City Mission, Friends of the Downingtown Library
Professional Expertise Public Urban Libraries, Collection Development and Library Management
Community Service Interests Adult Education, Job Training, Homelessness, Poverty, Equal Access to Information
Vision for Citizen Leadership Working to ensure free and accessible public services to all eligible citizens



MATT LILLARD *Owner, Green Savers LLC*
Volunteer Experience Kennett Education Foundation, Chester County Sierra Club, Chester County Citizens for Climate Protection, Chester County Green House Gas Reduction Task Force, Kennett Consolidated School District
Professional Expertise Executive Leadership, Management and Sustainability
Community Service Interests Basic Human Services, Environmental Causes
Vision for Citizen Leadership We all have different talents, abilities and demands on our lives. We live in communities with challenges and needs that are equally diverse and require our assistance in whatever form we can provide.



STACY A. MARTIN *Director of Commercial Sales & Leasing, The Hankin Group*
Volunteer Experience Chester County Economic Development Council Board, Commercial Real Estate Women, Chester County Fund for Women and Girls, Mommy's Light, American Cancer Society, Cystic Fibrosis Foundation
Professional Expertise Commercial Real Estate
Community Service Interests Children & Youth Programs, Homelessness, Affordable Housing, Cultural Arts
Vision for Citizen Leadership We all have the ability and capacity to serve. As volunteers we can reveal our better selves and lead others to action.



MAUREEN MACKAY NACEY, ESQ. *Associate Attorney, Gawthrop Greenwood*
Volunteer Experience Chester County Bar Association Foundation, Law-Related Education Committee, Access to Justice and Pro Bono Attorney
Professional Expertise Family Law Attorney
Community Service Interests Legal Aid, Women & Children's Groups, Affordable Local Housing
Vision for Citizen Leadership Citizen Leadership should garner a variety of local expertise and talent and stay focused on assisting agency mission and goals.



HEATHER LEIGH RAY *Special Events Coordinator, Cystic Fibrosis Foundation*
Volunteer Experience YWCA of Chester County, First Presbyterian Church, Delaware Valley Children's Charity
Professional Expertise Non-profit and Corporate Fundraising, Retirement Communities, Special Events
Community Service Interests Youth Leadership, Preservation of Natural Resources, Sustainable Living and Environmental Protection
Vision for Citizen Leadership A community in which all parties and constituents are active participants in decision-making is likely to be vibrant, healthy and inclusive.



GREGORY W. SAYLER *Director - Tellabs Programs, Communications Test Design, Inc.*
Volunteer Experience Sports Teams/Leagues: Philadelphia Folk Festival, Church
Professional Expertise Operations Management, IT, Human Resources
Community Service Interests Affordable Housing, Board Governance, Early Education
Vision for Citizen Leadership In our service at all levels of an organization, we can have a positive impact on the clients of the service, our fellow volunteers and on ourselves.



BARBARA A. SCHNELLER *Assistant Director, Office of Social Equity, West Chester University*
Volunteer Experience Church Board, Girl Scouts, Atkinson Men's Shelter
Professional Expertise Law, Diversity, Higher Education
Community Service Interests Civil Rights, Diversity, Affordable Housing, Homelessness
Vision for Citizen Leadership To utilize collaborative processes among the many organizations involved in the work of assisting members of our community to realize the goals of social and economic justice for all.



ROBERTA L. SHOWELL *Quality Control Supervisor, Sartomer Co.*
Volunteer Experience United Way Chairperson, Days Of Caring Coordinator, Chester County Literacy Program.
Professional Expertise Technical, Quality Control / Assurance
Community Service Interests Youth, Education
Vision for Citizen Leadership Do all that you can do while you can. Organize our strengths into compelling power.



CHARLES E. SWOPE, JR. *Real Estate Salesperson, Source Realty Group*
Volunteer Experience Swope Foundation VP, The Hickman, YMCA, Greater West Chester Chamber, Southeastern PA Autism Resource Center
Professional Expertise Environmental issues, Residential Development, Urban Revitalization: Pennsylvania licensed Real Estate Salesperson
Vision for Citizen Leadership To me, a well balanced community includes the citizen's commitment to public service.



JACK WAWRZONEK *Sales & Marketing Executive*
Volunteer Experience Youth Mentor and tutor, United Way Days of Caring, American Red Cross
Professional Expertise Sales and Business Management (Healthcare)
Community Service Interests Senior Issues, Health Care, Food Bank
Vision for Citizen Leadership Helping others meet their current needs while working with them on long-term solutions for their future.



KEN WITEK *Retired Financial Executive*
Volunteer Experience Board Treasurer - The Hickman & The Center on Hearing and Deafness, Junior Achievement, Special Olympics
Professional Expertise Finance, Accounting, Management, Auditing, CPA
Community Service Interests Affordable Housing, Environmental Issues, Land Conservation
Vision for Citizen Leadership I hope to utilize my experiences in the corporate world to assist in the development and governance of non-profits in our community.

